

LITHOCHROME® Color Hardener

ready-to-use, powdered, dry-shake color hardeners used to incorporate nonfading, permanent color into the surface of freshly placed concrete



SCOFIELD®
SYSTEMS



COLOR CHART A-112.09



LITHOCHROME® Color Hardener has been time-tested for over 75 years to produce durable, abrasion-resistant surfaces suitable for vehicular traffic and high use pedestrian areas in municipal, commercial and industrial projects. The uniform, streak-free hues of LITHOCHROME Color Hardener are consistent project-to-project and phase-to-phase. See Tech-Data Bulletin A-104.

High Opacity & High Performance

The leading dry-shake hardener, LITHOCHROME® Color Hardener produces durable hardscapes and floors. Formulated to be easily incorporated into the surface of freshly placed concrete, it produces dense horizontal surfaces that are easy to maintain and resistant to the effects of freeze/thaw cycles and deicing salts. In addition to the extensive range of colors shown, many color-matches can be provided by special order. An unlimited range of striking, high opacity colors can be produced. Custom color-matching is also available.

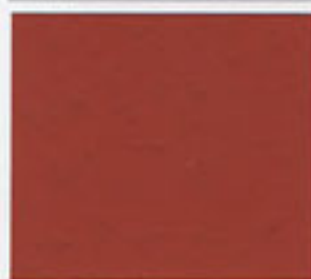
For best results, concrete should be cured with compatible Scofield Systems. COLORCURE® Concrete Sealer is available in matching colors. If a clear finish is preferred, SCOFIELD® Cureseal-W™ or SCOFIELD® Cureseal-S™ may be used. Where a premium-quality sealer is called for, SCOFIELD® Selectseal-W™ or SCOFIELD® Selectseal-S™ may be used. Color matched LITHOSEAL™ Buildingcalk-3S™ and LITHOSEAL™ Trafficalk-3G™ joint sealants are also available. For optimum results, use the total system of compatible curing compounds, sealers and caulks with premium quality LITHOCHROME Color Hardener.

The rich paste formed by LITHOCHROME Color Hardener is ideal for imprinting. LITHOCHROME® Antiquing Release is produced in all colors shown. See the current Scofield Color Group and Availability Chart for details.

EMERCHROME® Floor Hardener, for heavy-duty performance, is available in colors shown. SCOFIELD® Texturetop® and SCOFIELD® Overlay™ are available in colors to approximate all LITHOCHROME Color Hardener colors shown. Not all colors are inventoried. Contact your Scofield representative for availability.

For full details, review Tech-Data Bulletins.

Expressionist Colors



5816 Vermillion



3864 Peruvian Red



1005 Caution Yellow*



1173 Coconut Creme



1758 Espresso



A-27 Dark Red



3892-S Pistachio Green*



A-25 La Crescenta Brown



1511-S Denim Blue*



A-56 Venetian Pink



1037 Chalk Blue*



3773 Parisian Gray

Modernist Colors



5183 Stone Gray



A-24 Russet



2457 Kale Green*



0207 Antique Rose



0568 Blush Beige



A-57 Platinum Gray

Request the Color Group & Availability Chart.

Price and availability vary by color. Stocked colors typically are available in 3 working days in quantities up to 200 bags. Non-stocked colors are available in 7 working days in quantities up to 200 bags. Minimum orders may apply for non-stocked items and Special colors. No returns are accepted.

Colors indicated with an "S" in the number are Special Order. Prices vary for some blues and greens and are typically higher.

6016 White, A-11 Concrete Gray, and 0510 Black are also available.

LITHOCHROME® Color Hardener

Naturalist Colors

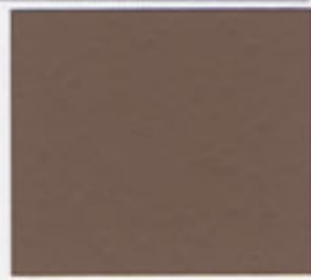
Traditionalist Colors



A-85 Muted Green



5758 Weathered Sage



A-55 Pecan Tan



5921 Walnut



A-59 Beige Cream



1138-S Blue Smoke



A-28 Tile Red



2121 Hacienda Amber



1137 Barclay Beige



A-51 Steadman Buff



1290 Cordovan Brown



2123 Green Slate



2170 Harvest Beige



2775 Mahogany Red



4617 Sandstone Beige



0808 Burgundy Mauve



5925 Warm Cork



A-29 Terra Cotta



1139 Burberry Beige



4471 Saddle Brown



0266 Ash White*



1136 Adobe Clay



A-53 Arizona Tan



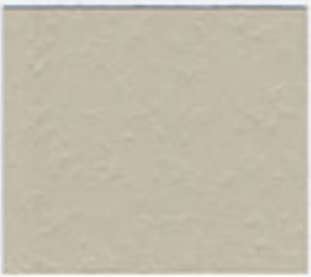
5971-S Wedgewood Blue*



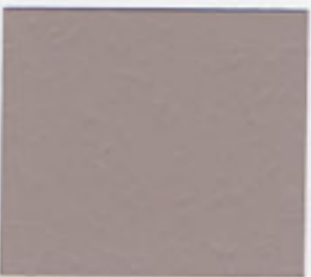
A-26 Brick Red



A-21 Deep Charcoal



3611 Oyster White*



4948 Smoke Beige



A-33 Classic Gray



A-50 Slate Gray

Colors are approximate and best viewed in daylight.

Colors shown approximate surface-hardened flatwork with a flat-troweled finish where LITHOCHROME® or heavy-duty EMERCHROME® have been cured with COLORCURE® Concrete Sealer. Surface-hardened concrete not so finished and cured will have less brilliance.

Coverage:

Coverage rates vary according to intended use and color. For commercial applications, LITHOCHROME Color Hardener should be applied at a minimum coverage rate of at least 90 lb (1.5 bags) per 100 ft² (4.5 kg/m²). Light colors and heavy duty wear areas require increasing the coverage rate. For other uses, it should never be applied at a coverage rate of less than 60 lb (1 bag) per 100 ft² (3.0 kg/m²).

* Denotes colors which require a minimum coverage rate of 120 lb/100 ft² (6.0 kg/m²).

Reach for Creativity and Versatility

A wide variety of appearances can be obtained by combining the various Scofield coloring systems, stains and tools.



Contrasting colors of LITHOCHROME Color Hardener make a high traffic outdoor plaza dramatic, even where a simple, broom finish has been used.



Durability and exciting effects can be achieved when LITHOCHROME® Chemstain™ Classic or LITHOCHROME® Tintura™ Stain is applied over textured LITHOCHROME® Color Hardener.



An interlocking LITHOTEX® Pavecrafters® pattern, Fractured Slate, looks realistic using Slate Gray LITHOCHROME Color Hardener and Deep Charcoal LITHOCHROME Antiquing Release.

Visit www.scofield.com for the most up-to-date Tech-Data Bulletins and information on Scofield Systems and activities.

 **SCOFIELD.**

1 800 800 9900 or www.scofield.com

© L. M. Scofield Company 2005 - All rights reserved. COLORCURE, EMERCHROME, LITHOCHROME, LITHOTEX, LITHOSEAL, SCOFIELD, Buildingcalk-3S, Chemstain, Cureseal-S, Cureseal-W, Overlay, Pavecrafters, Selectseal-S, Selectseal-W, Texturetop, Tintura and Trafficalk-3G are trademarks of L. M. Scofield Company.

The Scofield Story

L. M. Scofield Company, the leader since 1915, provides engineered systems for coloring, texturing, and improving performance in architectural concrete.

Scofield Systems transform ordinary concrete into an extraordinary, beautiful and durable building material. The engineered systems approach has been developed to address specialized requirements for interior, exterior and vertical uses with compatible systems of complementary products, including coloring admixtures, color hardeners, colored cementitious toppings, stains, color-matched curing, sealing, coating and caulking materials, and highly realistic texturing tools. For predictable, consistent results, the total system of compatible products must be used.

Specification assistance and comprehensive technical information are available for building industry professionals. Scofield offers AIA CES programs and lunch-and-learn presentations for the design community. Specialized, hands-on training programs are offered by The Scofield Institute at locations around the country.

Use the total engineered system to eliminate guesswork, ensure compatibility and improve performance long term. The total system includes compatible curing agents, sealers, coatings and treatments to protect and maintain the attractive surface appearance and help to reduce maintenance by resisting stains.

■ L. M. Scofield Company

Headquarters for Western USA and International
6533 Bandini Boulevard, Los Angeles, CA USA 90040
voice: 323 720 3000 fax: 323 720 3030

Headquarters for Eastern USA

4155 Scofield Road, Douglasville, GA USA 30134
voice: 770 920 6000 fax: 770 920 6060

Worldwide availability and support